

Knowledge Organiser - Year 7 key skills and Fauvist landscapes

a. Art keywords

| | |
|--------------------|---|
| Formal Elements | The parts used to make a piece of artwork. |
| Line | Line is the path left by a moving point. |
| Shape | A shape is an area enclosed by a line. It could be just an outline or it could be shaded in. |
| Form | Form is a three dimensional shape , such as a cube, sphere or cone. |
| Tone | This refers to the lightness or darkness of something. |
| Texture | This is to do with the surface quality of something, the way something feels or looks like it feels. |
| Pattern | Design, motif or symbol repeated over and over. |
| Colour | Sensation produced in eye by light reflected from objects. Paint for example, can possess a hue, such as red |
| scale | The relationship between the actual size of object and the size you draw it. |
| composition | The arrangement of elements within an artwork. The way you arrange objects to create your artwork |
| Observational | Observing and drawing object that is in front of you |
| Landscape painting | landscape painting, the depiction of natural scenery in art. Landscape paintings may capture mountains, valleys, bodies of water, fields, forests, and coasts and may or may not include man-made structures as well as people. |

b. Colour theory



Colour theory

Primary Colours =
red, blue & yellow

Secondary Colours =
purple, orange & green

Complimentary Colours =

- Orange & Blue
- Red & Green
- Yellow & Purple

Cold colours =
purple, blue & green

Warm colours =
red, yellow & orange

You cannot make a primary colour.

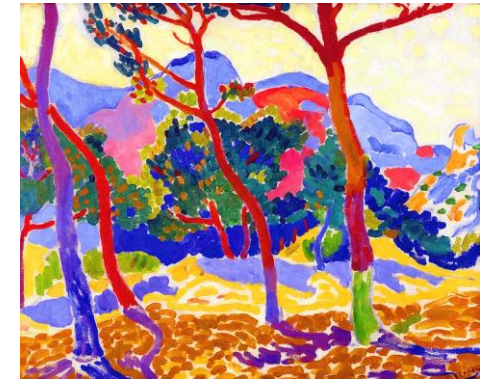
A secondary colour can be made by mixing two primary colours

c. Using tone to create form

You can show tonal values in pencil by applying pressure for darker tones and gradually taking off pressure. When shading a form always know the direction of light and shade darker further from the light

- Home learning tasks:**
1. Formal elements title page
 2. Shading basic shapes sheet
 3. Artists study and analysis
 4. Take a photograph of favourite landscape

Fauvism -a style of painting with vivid expressionistic and non-naturalistic use of colour that flourished in Paris from 1905 and, although short-lived, had an important influence on subsequent artists, especially the German expressionists. Matisse was regarded as the movement's leading figure.



David Hockney- born 1934
A British artist who produced a series of works that was influenced by the Fauvist style.

'Mullholland drive: the road to the studio' 1980

- Artists:**
- Henri Matisse
 - Andre Derain
 - Raoul Duffy
 - Marc Chagall
 - Maggie Laubser
 - Alice Bailly

