

Year 8 CPSHE Autumn Term 1
Welcome and Public Institutions

Lesson overview	1
Year 8 CPSHE	
The Ullathorne Way and Character Passport.	
Public services	
Health service	
Fire safety	
The police	
The courts	

Here are some of the services the public institutions provide/oversee:

- Education and learning
- Home and community
- Money, tax and benefits
- Travel and transport
- Crime, justice and the law
- Motoring
- Employment
- Health and well being
- Environment and greener living
- Government and rights



4

Key-words	Definitions	2
Public services	Public services are those – such as health and education – considered so essential they are made available to all citizens, regardless of income .	
Tax	This is money that you pay on your income and other items (for example VAT) and the money goes to pay for the public services.	
NHS	National Health Service. It refers to the Government-funded medical and health care services that everyone living in the UK can use without being asked to pay the full cost of the service.	

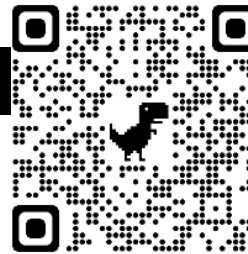


5

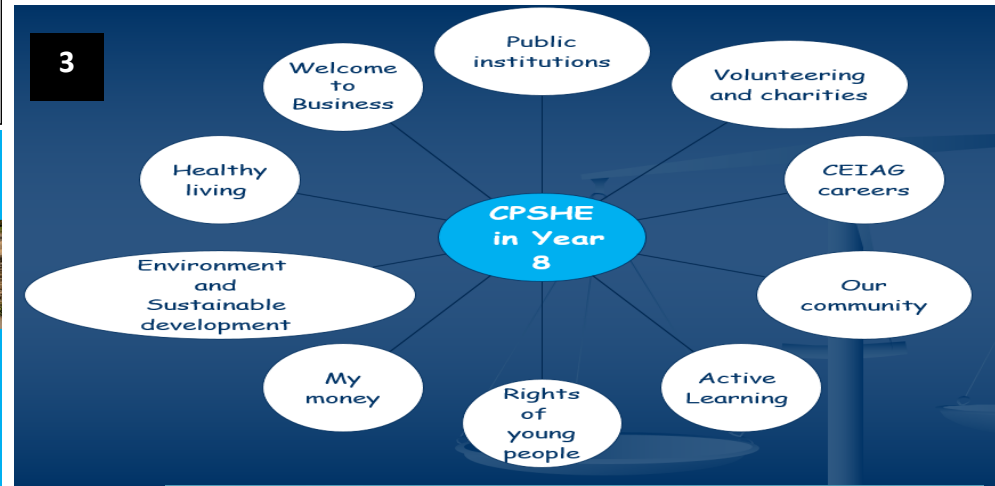
Types of **courts** in the UK:

- County **Court**.
- Magistrates' **Court**.
- Crown **Court**.
- Royal **Courts** of Justice .
- Youth **Court**.
- The Supreme **Court**.

7

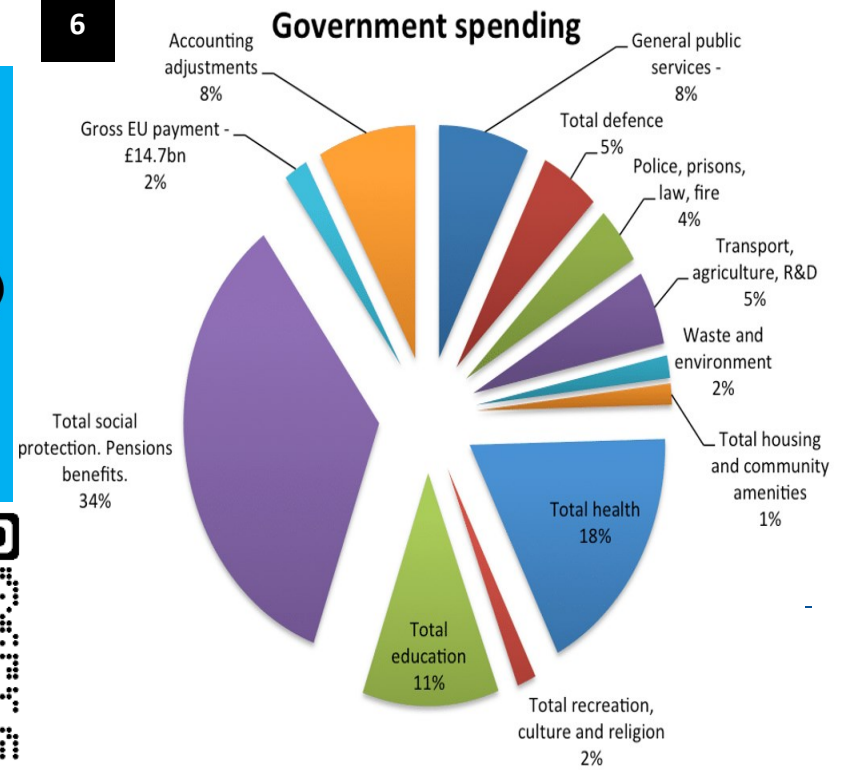


8



3

6



9

What are the 3 main duties of the police?

- To protect life and property
- To maintain public order
- To prevent and detect crime

Year 8 CPSHE Autumn Term 2

Volunteering and Charities / Our Community

Lesson overview

Volunteering and Charities

Our Community

Identity

Refugees

Asylum seekers

Keywords

Definitions

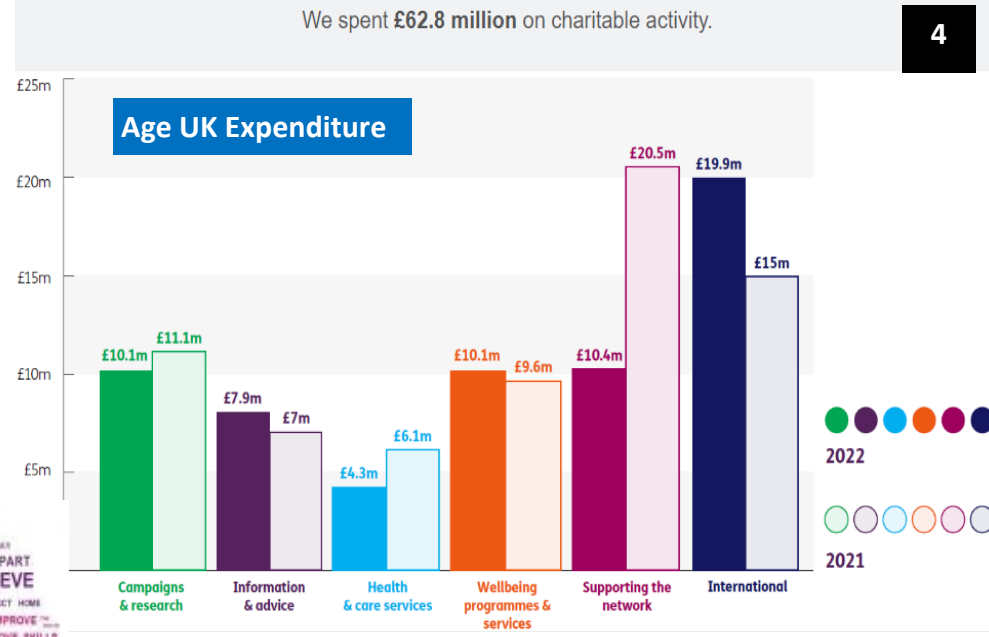
Volunteering
Any activity that involves spending time, unpaid, doing something that aims to benefit the environment or someone

Charity
An organisation that provides action and support based on donations.

Refugees
A person who flees for refuge or safety, especially to a foreign country, as in time of political upheaval or war for example.

Asylum seekers
A person who has left their home country as a political refugee and is seeking asylum in another.

Personal Identity



6 WHO IS A REFUGEE?

A **refugee** is someone who owing to a well-founded fear of being persecuted for reasons of race, religion, nationality, membership of a particular social group or political opinion, is outside their country of nationality, and is unable to, or owing to such fear is unwilling to avail himself of the protection of that country.

7 WHO IS AN ASYLUM SEEKER?

An **asylum seeker** is someone who has made a claim that he or she is a refugee, and is waiting for that claim to be accepted or rejected.

Not every asylum seeker will be recognised as a refugee, but every refugee is **initially** an asylum seeker.

