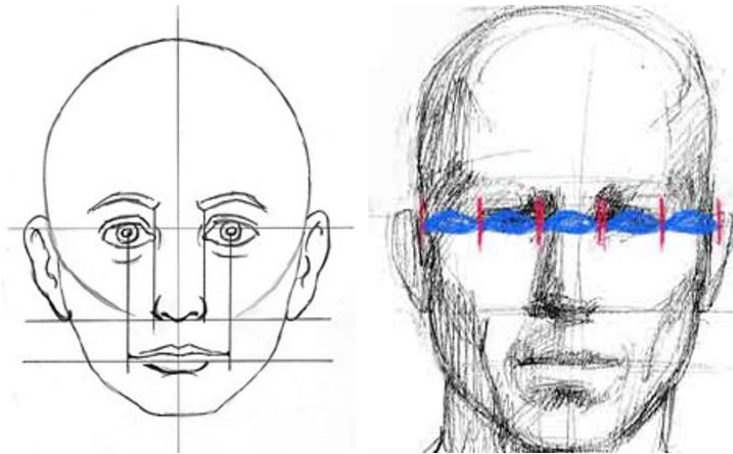
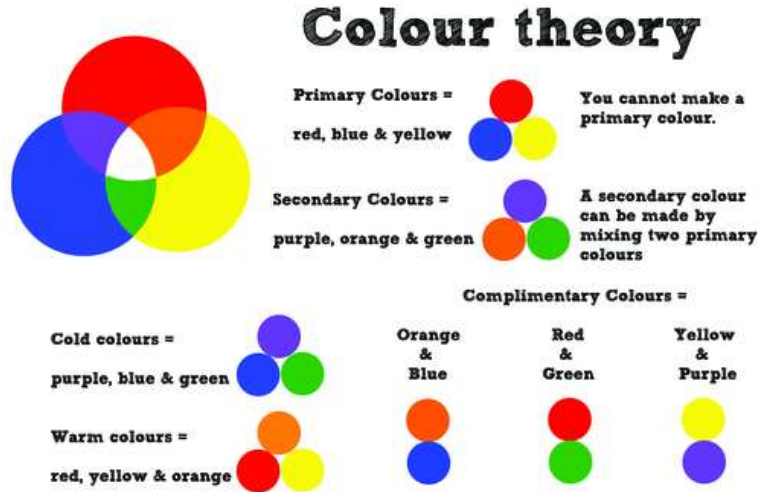


## Knowledge Organiser – Year 7 Formal Elements and FACES – Study sheet and painting outcome

proportion	Proportion refers to the relationship in size and placement between one object and another. When creating realistic portraits, it is important to get the facial proportions correct.
Tonal value	Tonal Value (also known as Tone or Value) is defined as the lightness or darkness of colour.
Self portrait	The simple self portrait definition is a portrait of an artist created by that artist him- or herself.
portrait	A portrait is a representation of a particular person.
Expressionism	refers to art in which the image of reality is distorted in order to make it expressive of the artist's inner feelings or ideas.
Distortion	involves stretching, lengthening, shortening, squeezing, melting and twisting an object from its original appearance to a new, strange, surreal appearance.
composition	The term composition means "putting together". It can be thought of as the organization of the elements of art according to the principles of art. Composition can apply to any work of art, from music through writing and into photography, that is arranged using conscious thought



#### Home learning tasks:

1. Draw a family member
2. Draw a detailed feature of the face in tone
3. Artists study and analysis
4. Draw a famous celebrity you admire

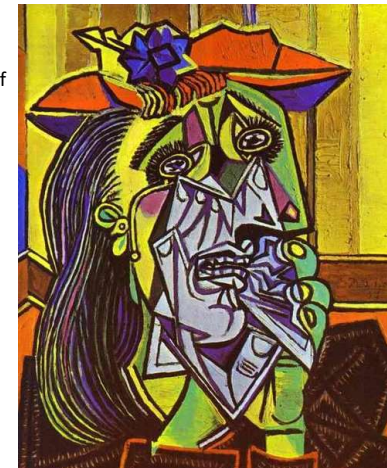
Portrait art captures the essence of a person through visual representation. This ancient art form spans cultures and time periods.



**Kehinde Wiley** – a famous Contemporary artist and diverse, cultural and celebrates youth culture in his amazing depictions of portraits

**Rembrandt** – self-portraits and famous for amazing use of light

**Picasso** – self-portraits and famous for abstracting features and in particular this portrait of a Woman crying shows the impact on a sad event the passing of her husband.



**Artists:**  
**Kehinde Wiley**  
**Vince Lowe**  
**Sandra Chevrier**  
**Edvard Munch**  
**Picasso**