

## Knowledge Organiser - Year 9- Portraits- Outcome: Self portrait in style of choice

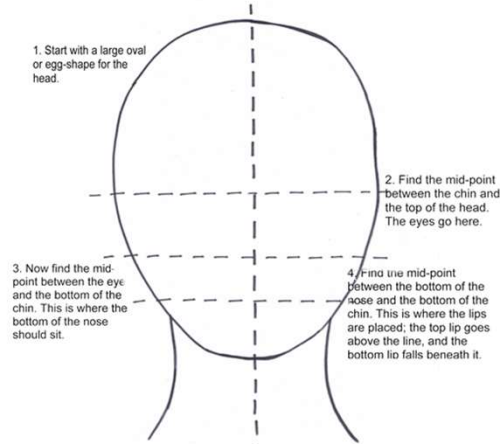
proportion	Proportion refers to the relationship in size and placement between one object and another. When creating realistic portraits, it is important to get the facial proportions correct.
Tonal value	Tonal Value (also known as Tone or Value) is defined as the lightness or darkness of colour.
Self portrait	The simple self portrait definition is a portrait of an artist created by that artist him- or herself.
portrait	A portrait is a representation of a particular person.
Expressionism	refers to art in which the image of reality is distorted in order to make it expressive of the artist's inner feelings or ideas.
Distortion	involves stretching, lengthening, shortening, squeezing, melting and twisting an object from its original appearance to a new, strange, surreal appearance.
composition	The term composition means "putting together". It can be thought of as the organization of the elements of art according to the principles of art. Composition can apply to any work of art, from music through writing and into photography, that is arranged using conscious thought

### Home learning tasks:

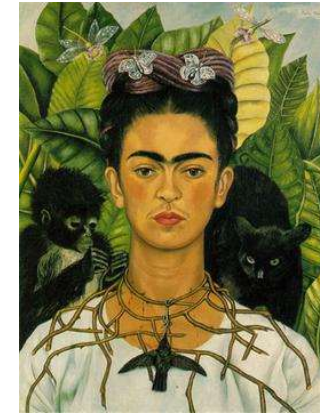
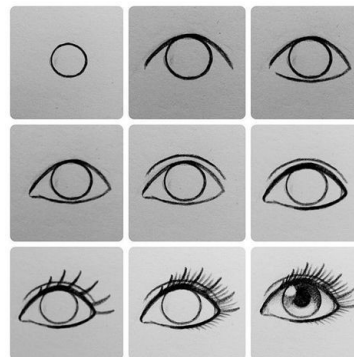
1. Complete features practice sheet (eyes and noses)
2. Using proportion guide produce a portrait or self portrait, in pen or pencil
3. Using art analysis sheet produce an artist study sheet on chosen artist; include copy of artists work (2 weeks)

a.

### Facial Proportions

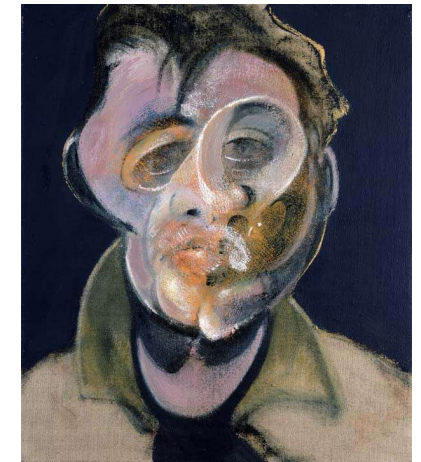


Understanding facial proportions are essential to help you draw an accurate portrait.

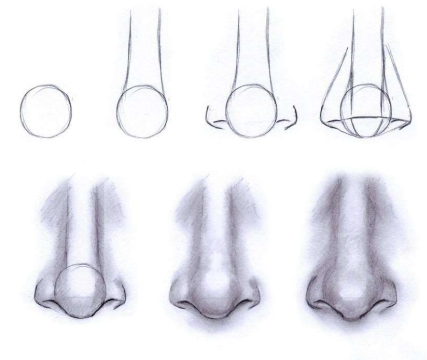


b. Frida Karlo, Mexican artist  
 Born: 6 July 1907  
 Died: 13 July 1954 (aged 47)  
 Karlo used portraiture to express personal things about herself and her culture/heritage.

c. Francis Bacon  
 Born: 28 October 1909, Dublin, Ireland  
 Died: 28 April 1992, Madrid, Spain.  
 Bacon's work has been described as having 'a distinctive and disturbing realism'

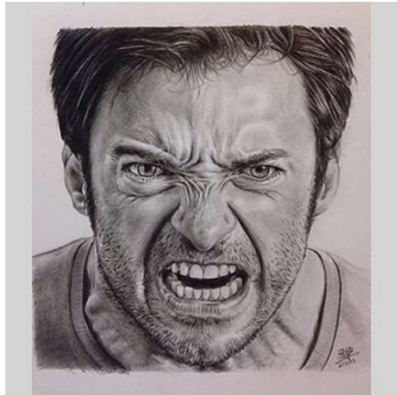


d. Drawing features  
 Eye::using a step by step guide to build up structure and then add detail.  
 Nose, very simple structure and rest made up with shading

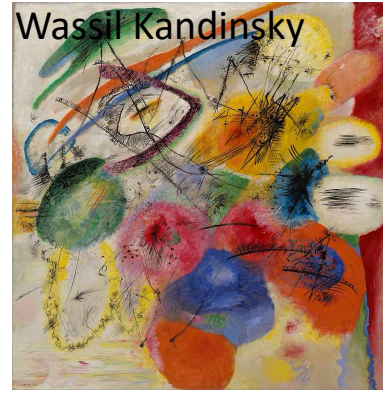


**Knowledge Organiser – Year 9- Skill Grid- Outcome: Produce a grid of different techniques and skills**

Watercolour painting	Watercolor or watercolour, also aquarelle, is a painting method in which the paints are made of pigments suspended in a water-based solution. Watercolor refers to both the medium and the resulting artwork.
Oil pastel	An oil pastel is a painting and drawing medium formed into a stick which consists of pigment mixed with a binder mixture of non-drying oil and wax, in contrast to other pastel sticks which are made with a gum or methyl cellulose binder. They can be blended with white spirit.
Scruffito	(Italian: "scratched"), in the visual arts, a technique used in painting, pottery, and glass, which consists of putting down a preliminary surface, covering it with another, and then scratching the superficial layer in such a way that the pattern or shape that emerges is of the lower colour.
Tonal drawing	Tonal drawing is the variation of black to grey that is given to a drawing on paper usually with a pencil. ... So, simply put Tonal drawing is the art of gradual increase or decrease from light to dark from one part of the drawing to another.
Abstract art	is art that does not attempt to represent an accurate depiction of a visual reality but instead use shapes, colours, forms and gestural marks to achieve its effect. Wassily Kandinsky. Cossacks 1910-1. Tate. Strictly speaking, the word abstract means to separate or withdraw something from something else.



**PENCIL SHADING —**  
*Draw a close up of a face in pencil*



**Block painting —** *a close up of an abstract painting*



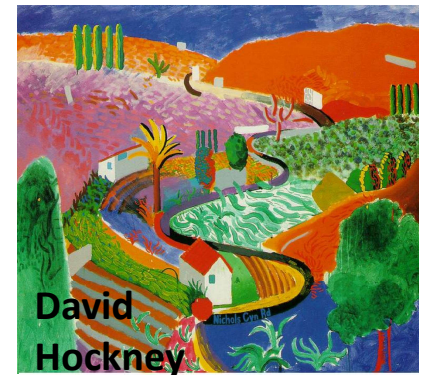
**Impasto painting —** *use expressive thick paint*



**Black fine liner —**  
*work in the style of 'Zentangle'*



**Pencil crayon-** *copy a close up of a natural forms picture*



**David Hockney**  
**Pastel drawing -** *choose from oil or soft pastel to draw a landscape/street scene*

**Home learning tasks:**  
Tasks will be set as work develops and may be completing work or researching artists.